

# Afternoon Learning

12.2.21

# Spellings

This week, we all have the same 7 spellings to learn!

Monday

Tuesday

Wednesday

Thursday

Friday

Saturday

Sunday

12.2.21

## Handwriting

a a a a ...  
A A A A ...  
b b b b ...  
B B B B ...  
c c c c ...  
C C C C ...  
d d d d ...  
D D D D ...  
e e e e ...  
E E E E ...  
f f f f ...  
F F F F ...

Either

↳ stop at F

or

↳ carry on to Z

Here is what the rest should look like, if you want to carry on...

gG hH iI jJ kK lL mM nN

oO pP qQ rR sS tT uU vV

wW xX yY zZ

# Handwriting

Remember the correct letter formation! 😊

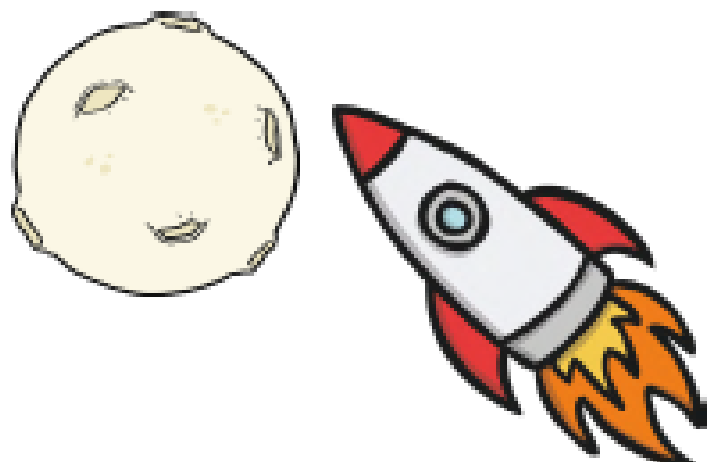
# Guided Reading...

Here we have some reading comprehensions to suit your Phonics levels. Please read your group's reading comprehension independently! You can ask an adult to help you with the questions.

# Mrs Booton's Group

## Zoom to the Moon

- 10 I am in a rush to get to the Moon.  
16 I zoom up into the night.  
21 The stars are my light.  
29 My ship hits the rock with a thud.  
37 I hop down and look near and far.  
44 It is too dark on the Moon.  
50 I zoom back to my bed.



## Read Together Quick Questions



1. What does the author see on the way to the way to the Moon? Tick one.

- planets  
 stars  
 rockets



2. Where does the text end? Tick one.

- on the Moon  
 in bed  
 in the rocket ship



3. Which word describes the way the ship hits the Moon? Tick one.

- bang  
 bash  
 thud

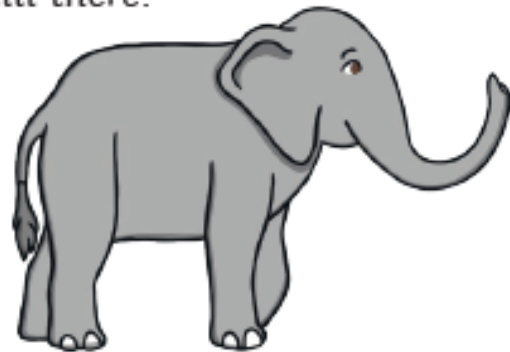


4. Do you think that the author liked being on the Moon?

# Miss Porter's Group

## The Queen's Elephant

8 People say that The Queen has a big  
15 elephant in her garden. The elephant sleeps  
24 in the shed and eats cream buns. She has  
32 never been seen outside of the garden but  
40 lots of people think that it is true.  
49 I think that The Queen likes to ride her  
52 elephant at night.  
60 One day, the elephant broke a statue of  
70 The King and ate all of the cakes that the  
77 cook had made. "That elephant must go!"  
80 said The King.  
87 I think that she is still there!



## Read Together Quick Questions



1. Where does the elephant sleep?

---



2. Why do you think that The King said '**That elephant must go!**'

---



3. Find and copy one adjective used to describe the elephant.

---



4. What do you think might happen next to The Queen's elephant?

---

---

---

# Mrs Chhabra's Group

## The Pup Is in the Mud

- 4 Sam is a pup.
- 8 The pup is fun.



- 14 The pup is in the bag.
- 19 The pup has a bun.

The pup is in the mud.



- 31 The pup is on the bed.
- 37 The mud is on the bed.

## Read Together Quick Questions



1. What is the pup's name? Tick one.

- Bud
- Sam
- Dan



2. What does the pup do first? Tick one.

- The pup is on the top.
- The pup is in the bag.
- The pup is on the mud.



3. Which word is used to tell us what the pup is like? Tick one.

- sad
- fun
- bad



4. Where might they put the pup next? Tick one.

- in the bed
- back in the mud
- in the bath

# Yoga

Wow Year 1, what a half term we have had! You have all been absolute superstars, thank you so much for working so hard for me.

To round off a strange half term, we are going to relax and find our 'zen' with our Friday afternoon yoga session. Enjoy 😊

<https://www.youtube.com/watch?v=laS0A4I1C9A>



# Storytime

<https://www.youtube.com/watch?v=a9K-sAKdk2Y>

# Star of the week

You are ALL my stars of the week!!

You have all been fabulous this half term, you all deserve a massive high five!

For now, give yourselves a pat on the back. When you come back to school you can all have a prize from our prize box 😊